



[Welcome](#)

[Page 2](#)

[Essential Information](#)

[Page 4](#)

[Cycle Transition](#)

[Page 5](#)

[Swim](#)

[Page 5 & 6](#)

[Cycle](#)

[Page 7 - 9](#)

[Run](#)

[Page 10](#)

[Relay](#)

[Page 11](#)

[Results & Prizes](#)

[Page 11](#)

[Photography](#)

[Page 12](#)

[Other Important Information](#)

[Page 12](#)

[UK Triathlon League](#)

[Page 14](#)

[UK Triathlon Merchandise](#)

[Page 15](#)

[Our Partners](#)

[Page 16](#)

# Race Day Information

Saturday 27th July 2024

Boldmere Gate, Sutton Park, Sutton Coldfield

B73 6LH / [what3words famous.loops.venues](http://what3words.famous.loops.venues)

Start Time	Race Category (ages at 31/12/2024)
07:00am	Sprint Open
07:30am	Sprint Female and Relay
08:00am	Olympic Open 39 and under
09:00am	Olympic Open 40+, Female & Relay
09:45am	All Fun and Super Sprint

Welcome to the Birmingham Triathlon. Please read this Race Day Information prior to the event day to ensure you arrive fully prepared.

## Race Day Checklist

- Race number (can be found on your race day email)
- Wetsuit / Trisuit or swimwear
- Swimming goggles
- Towel
- Appropriate cycling/running kit if you're not wearing a trisuit
- Additional clothing for wet/cold weather
- Cycle
- Cycle Shoes (unless you're cycling in your running shoes)
- Cycle helmet
- Drinks bottle
- Elastic number belt (optional but available to purchase next to registration)
- Sunglasses (optional)
- Cycle tools/puncture kit (if desired)
- Running shoes
- Running cap (optional)
- Energy drinks, gels, bars
- Change of clothing for after your race

## Distances

Race	Swim	Cycle	Run
Olympic & Olympic Relay	1500m	40k	10k
	2 Laps	8 Laps	4 Laps
Sprint & Sprint Relay	750m	20k	5k
	1 Lap	4 Laps	2 Laps
Super Sprint & Fun	200m	10k	2.5k
	1 Lap (short course)	2 Laps	1 Lap

## Travel & Parking Information -

Sat Nav postcode is B73 6LH and What3Words famous.loops.venues

Parking is available on Sutton Park next to registration and the event arena.

**There is a charity donation of £3 for parking by The Rotary Club of Erdington. Cash or card payment is accepted.**

Parking will be open from 05:45am. All cars that are parked on the grass, must exit by 4pm.

On arrival please follow the Triathlon parking signs.

## Where are the toilets and changing facilities?

Toilets are located on the event field and inside the Cycle Transition Area.



# Event Arena



Google

All maps and text were correct as going to print. All triathlon events have the right to change the course at any time. Birmingham Triathlon 2022

## Registration

- Registration is located in the orange Mornflake marquee
- Please arrive at least 1 hour before your start time.
- At registration you will be asked for your race number (which can be found on your email), once your details have been checked you will be handed your race envelope and an instruction sheet, please read this carefully.
- Registration will be open on Friday from 3:00pm - 6:00pm and on Saturday morning from 05:45am.

## Race Envelope

- At registration you will receive a swim cap and a race envelope containing:
  - Race Number x2, Cycle Sticker x1, Helmet sticker x1, Electronic timing chip and strap x1
  - Safety pins will not be enclosed however they will be available if required.

## What to do with your Race Envelope contents

- Attach the cycle number sticker to the front handlebar stem.
- Attach your helmet sticker to the front of the helmet.

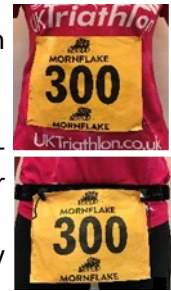


## Race Numbers

Your race number must be clearly displayed on your back for the cycle and clearly displayed on your front for the run. You have two options:

1. Pin each race number in all four corners, front and back onto your shirt.
2. Use an elastic number belt (available to buy next to registration for £10) with one or both numbers pinned to it in the top left and right hand corners (as shown in picture). Don't forget your number must be visible on your back for the cycle and on your front for the run.

Please print your name, blood group (if known) and any allergies or medical conditions you may have on the back of your race number. You must not re-size your race number in any way.



## Chip Timing

Check your electronic timing chip number corresponds with your race number. Your timing chip must be worn on the outside of your LEFT ANKLE with the soft side of the strap against your skin. Please follow these simple steps to wear your chip correctly.

1. Thread the loose strap through the timing chip and securely fasten the Velcro.
2. The chip should be secure on the strap and the number visible.
3. Place the strap around your LEFT ankle with the chip on the outside of your ankle.
4. Give the chip a firm pull, it should remain securely fastened.

Please hand in your electronic timing chip at the finish line whether you complete the course or not or you will be required to pay £25.00 to replace it.



## Important Cycle Care Information

Make sure your cycle is ready for the event. If you are unsure get it serviced by a professional prior to the event. There WILL NOT be a cycle mechanic at the event.

There will be a SELF SERVICE CYCLE STATION located next to the massage tent. It has track pumps, specific cycle tools, tyre levers and a cycle stand.

Inner tubes will be for sale in the UK Triathlon store next to registration. You should however carry a spare inner tube which specifically fits your wheels.



## Before entering Cycle Transition Area

Please put on your helmet and fasten the strap to show the marshal on entry. You are responsible for checking your own cycle brakes, your cycle must be in road worthy condition.

- Open from 6:00am.
- Only competitors are allowed in the Cycle Transition Area. You cannot enter the Cycle Transition Area until your cycle and helmet stickers are attached (see page 3).
- Competitors should only bring into transition what is needed - a small bag can remain by your cycle.
- Rack your cycle in an empty space in Cycle Transition Area, the white tape on the poles denotes a racking position.

## Security

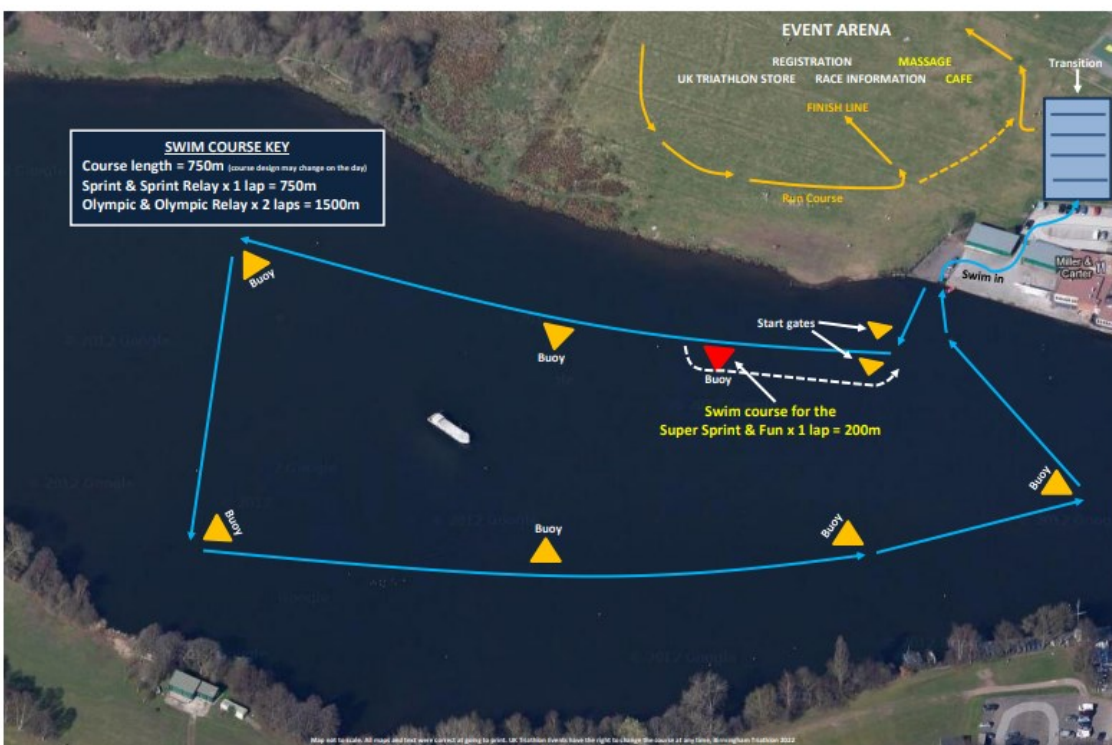
Although we allocate security staff to specifically watch the Cycle Transition Area, please note that we cannot be responsible for any items lost or stolen.

*From the Cycle Transition follow signs 'To Swim Start'*

# Swim

- Remember to take everything you need for the swim, wearing your timing chip and strap!
- You should be at the swim start 15 minutes prior to your start time to listen to the compulsory race brief.
- Wetsuits are compulsory for the Olympic and Olympic Relay Triathlon. Although not compulsory we recommend wearing a wetsuit for the Sprint distance.
- Wetsuits are not compulsory for the Sprint, Super Sprint & Fun triathlons.
- **If you wear a wetsuit for the swim, make sure when you take it off at your transition point that it is either bagged or neatly placed under the racking pole. Wetsuits that cause a tripping hazard will incur a 2 minute transition time penalty.**
- All relay team members must attend the Race Brief.
- There will be safety kayakers on the course
- Position yourself at the start of the swim according to your swim ability and experience. If you haven't any experience of a mass start or you are not a strong swimmer, consider starting further back or to the side of the main pack.
- You will enter Powell's Pool via the concrete jetty close to the Miller & Carter Steak House and the swim starts in the water.
- As an added precaution, as soon as you get into water that is deep enough to swim, then please swim and don't walk.
- If for any reason you have to stop swimming during the event and the water is shallow enough to stand (this is only in a few areas) then stand in the same position until you are content to continue swimming or if not then raise one arm and a safety craft will come to your assistance.

Olympic / Olympic Relay - 1500m - 2 laps  
Sprint / Sprint Relay - 750m - 1 lap  
Super Sprint and Fun (short course) - 200m - 1 lap



## Getting ready for the cycle

- When you finish your swim, head into the Cycle Transition Area.
- Your race number must be clearly displayed on your back for the cycle section of the event. You must fasten your helmet before taking your cycle off the rack.
- Any type of cycle can be used as long as it is in a road worthy condition. Electric bikes can be used but the battery must be taken out, or completely disengaged during the triathlon.
- After collecting your cycle, walk or run to the cycle mount line where you commence the cycle section of the race, you cannot mount your cycle until you have crossed the mount line.

## The Course

- The course is within Sutton Park and has more bends than if it were on public highways.
- Although the cycle course is closed to normal vehicular traffic, there may be pedestrians, dogs not on leads or wild animals (cattle) on the course at any point so take extra care, especially at sharp turns and blind bends.
- Keep to the right at all times except when overtaking. Overtake on the left.
- Follow the cycle route signs around the course and do not turn until you see a sign.
- Please take extra care at all junctions although there are safety marshals present, they are not there to tell you where to go.



## Drafting

Competitors must keep their distance from the cyclist in front of them, so as not to gain an advantage. In this event the gap between the front wheel of the leading cycle, to the front wheel of the following cycle should be 10 metres - if overtaking a competitor, you have 20 seconds to pass through their draft zone.



## Counting Laps

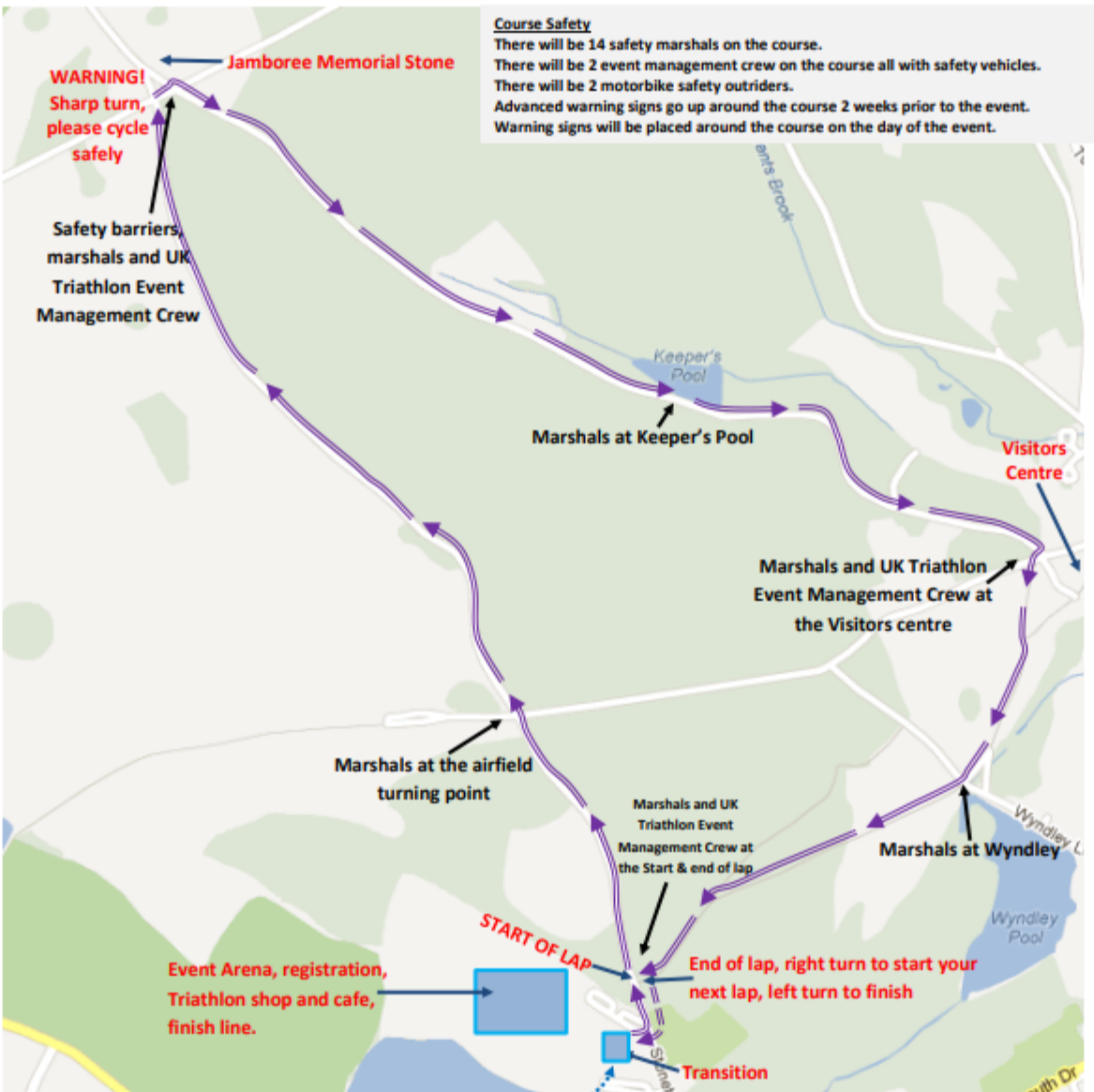
- Use your cycle computer, attach a GPS device or a watch with lap counting capability and after each lap, press to start a new lap. This way, you will know which lap you are currently on. Look for the 'end of lap' and immediately after the 'start of lap' signs.
- It is solely your responsibility to count your laps, race marshals cannot advise you. Insufficient laps will result in a disqualification.
- Once you have completed the correct amounts of laps, follow the cycle finish signs.

## Dismount

Dismount your cycle at the end of the cycle course before the dismount line, a marshal will also tell you to do so, Cycling is not permitted inside the Cycle Transition Area. Do not unbuckle your helmet until you have racked your cycle.

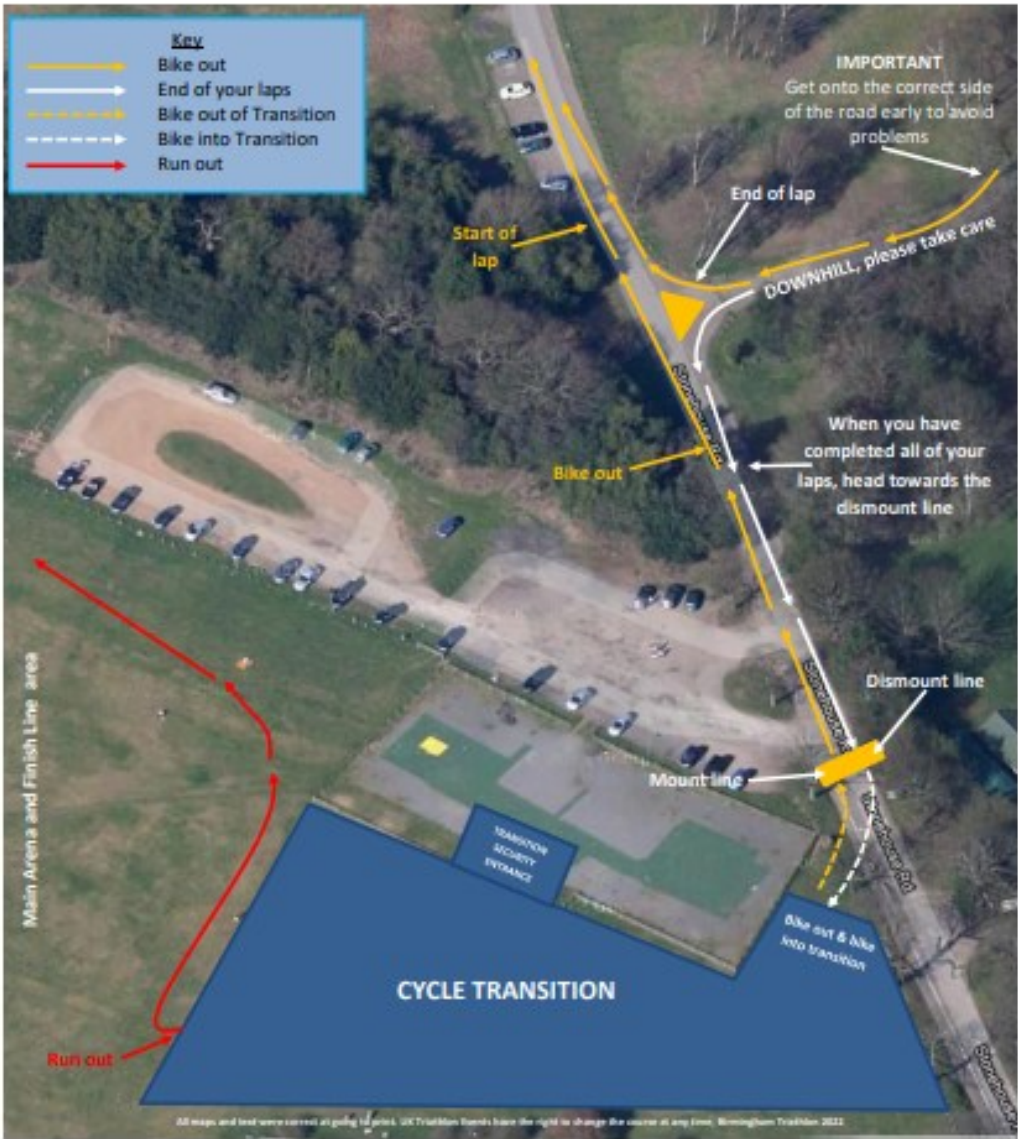


# Cycle Map



Olympic/ Olympic Relay - 40k - 8 laps  
Sprint / Sprint Relay - 20k - 4 laps  
Super Sprint and Fun - 10k - 2 laps

# Cycle Map - Start & end of lap



# Cycle Map - Visitors Centre





## Upon completion of the cycle, rack your cycle and follow the 'Run Out' signs

- Your race number must be clearly visible on your front before leaving the Cycle Transition Area.
- Follow the run route signs around the course. It is up to you to count your laps on the run, marshals will be taking numbers as a check in the case of suspected insufficient laps completed.
- There is one feed station on the run course which you will pass on every lap, and one at the finish line which will be serving High5 energy drink and water.
- Please use the bins provided, there must be no littering on the course.
- When you have finished the run, turn onto the finish alley and continue through the Mornflake finish gantry.
- Don't forget to collect your finishers medal and hand in your timing chip!



You cannot take your cycle out of the Cycle Transition Area without your race number and corresponding cycle sticker.

# Run

Olympic / Olympic Relay - 10k - 4 laps  
Sprint / Sprint Relay - 5k - 2 laps  
Super Sprint and Fun - 2.5k - 1 lap

# After the triathlon



If you are an all female relay team and you change to a mixed team, please inform us at [customer care@uktriathlon.co.uk](mailto:customer care@uktriathlon.co.uk) or on the day at registration.

## How to Relay

- Each member of the relay team completes one or two of the three disciplines in the triathlon.
- At registration you will be given one electronic timing chip.
- After completing the swim, the swimmer passes the electronic chip to the cyclist inside the Cycle Transition Area next to where the cycle is racked.
- The cyclist must not put their helmet on or take their cycle off the rack until receiving the electronic chip.
- The cyclist completes the cycle course and passes the electronic chip over to the runner in the transition area only when the cycle has been placed back on the rack and their helmet has been fully removed.
- The runner completes the run and hands in the timing chip at the finish line.
- The other team member/s may join the runner before the finishing straight and cross the finish line as a team.
- You all receive a 2024 finisher medal!
- Relay awards are based on all female or all male/open category /mixed teams. Open category/mixed teams can consist of three men, two men and one woman or one man and two women.

## Results & Prizes

- Provisional results and times will be online on Monday 29th July 2024.
- Should you have any problems with your results please email [results@uktriathlon.co.uk](mailto:results@uktriathlon.co.uk) once the results have been finalised.
- Commemorative 2024 finisher medal.
- Prizes are awarded to the top 3 competitors in the Olympic, Sprint and Super Sprint competitions. 1st place is awarded to all female and all open category/mixed teams in the Relay.
- Prizes for the first place in all five year age groups (see table below) in the Olympic and Sprint triathlon only.

Code	Category	Age
A/B	Youth	16-18
C	Junior 19	19
D	Senior 1	20-24
E	Senior 2	25-29
F	Senior 3	30-34
G	Senior 4	35-39
H	Veteran 1	40-44
I	Veteran 2	45-49

Code	Category	Age
J	Veteran 3	50-54
K	Veteran 4	55-59
L	Veteran 5	60-64
M	Veteran 6	65-69
N	Veteran 7	70-74
P	Veteran 8	75-79
Q	Veterans 9	80+

UK Triathlon and our official event photographers, My Sport Photos, will be filming/taking photos to capture your best sporting moments. Images may be used for promotional purposes so remember to smile and wave at the camera! Images taken by My Sport Photos will be available to purchase post event. An email will be sent to you once the photos are available. For any photography inquiries please contact [info@mysportphotos.co.uk](mailto:info@mysportphotos.co.uk) or [www.mysportphotos.co.uk](http://www.mysportphotos.co.uk).

### Race Conduct

Everyone involved in the event is there to ensure you have a safe and enjoyable experience, so we ask that you respect your fellow competitors and treat all technical officials, event organisers, race crew, volunteers, and spectators with courtesy. Any abuse towards these people will not be tolerated and as a result you may be disqualified.

### What do I wear?

Wetsuits are compulsory for the Olympic/Olympic Relay distances. For the Sprint/Sprint Relay/Super Sprint/Fun distances you can wear a wetsuit/swimsuit/trunks or a triathlon specific trisuit for the swim. For both the cycle & run leg you can wear cycling or running gear that you're able to both cycle and run in, or a mixture of both. You can also wear a T shirt and shorts. The UK Triathlon technical series shirt is also a good option and can be purchased at the event (subject to availability). You can also wear a triathlon specific trisuit. If it is cooler, you can wear long sleeves or long pants or add layers like a windproof jacket.

### Is there a bag drop area?

There is no bag drop area, but you can leave a bag in the Cycle Transition Area.

### Illegal Equipment

For your safety and the safety of other competitors, certain items are banned during the event as well as in the cycle transition. This includes any music, headphones, headsets, technical earplugs (including bone conduction headphones), mobile phones and personal video recording devices. You may however use your device for tracking your race i.e Strava/Garmin.

### Littering

Do not discard water bottles, gel or bar wrappers. Littering is prohibited during the event. Please use the bins at the feed stations or at the venue. If you can carry a gel full, you can carry the wrapper empty.

### Race Format

UK Triathlon reserve the right to alter the date, start time, venue or format of an event. Similarly, changes to the event may occur due to adverse weather conditions, 'acts of God', water conditions or emergency road closures. Participants will be notified as soon as possible of any changes. As long as the event is staged no refunds or transfers can be given.

In our open water triathlons, although we provide safety cover at the event and test water quality prior to each event, you swim at your own risk.

Birmingham Triathlon	27th July 2024
York Kids Triathlon	17th August 2024
York Triathlon	18th August 2024
Shropshire Triathlon	8th September 2024
North West Kids Duathlon	21st September 2024
North West Triathlon	22nd September 2024
Warwickshire Triathlon	6th October 2024
Stratford Triathlon	27th April 2025
Cheshire Kids Duathlon	10th May 2025
Cheshire Triathlon	11th May 2025
Henley Kids Triathlon	31st May 2025
Henley Triathlon	1st June 2025
Alderford Kids Duathlon & Triathlon	15th June 2024
Alderford Triathlon	16th June 2024
Ultimate Triathlon	30th June 2024
Ultimate ½ Triathlon	30th June 2024
Ultimate Olympic & Sprint Triathlon	30th June 2024
Chesham Kids Triathlon	13th July 2024
Buckinghamshire Triathlon	14th July 2024

For more information please visit [uktriathlon.co.uk](http://uktriathlon.co.uk)



# UK Triathlon LEAGUE 2024

Take part in 3 or more qualifying UK Triathlon Events in 2024. Compete against your rivals, see if you can win your age group or even the entire league!

Complete a minimum of 3 Sprint or Standard Olympic distance (includes Ultimate 1/4) events to automatically enter the league.

Track your progress against your friends, team mates or rivals.

Take part in the league as a challenge or incentive to improve your swimming, cycling and running.

Every event earns you points as a percentage of the winners time, so your points earned are always comparable to other events, whichever one you do.

If you do more than 3 events, your best 3 results will count for your overall standing.

Overall winners and 1st in every age group awarded at the end of the season.

[UKTriathlon.co.uk](http://UKTriathlon.co.uk)





# OFFICIAL UK TRIATHLON TRI WEAR



UNISEX FIT  
TECH SHIRTS

£20

AVAILABLE  
TO BUY  
AT  
YOUR  
EVENT

# DABBERS DINER

## Classic Diner

Food Served All Weekend

Burgers ★ Hot Dogs ★ Chicken Wraps

Wide Selection of Breakfast Baps, Hot & Cold Beverages







# MIGHTY OATS

## PROUD SPONSORS OF UK TRIATHLON



[mightyoats.com](https://mightyoats.com)



\*Oat beta glucans have been shown to help lower blood cholesterol. Blood cholesterol lowering may reduce the risk of coronary heart disease. One 40g portion of Mornflake Superfast Oats provides 1.8g of beta glucans from oats, which is 60% of 3g the suggested daily amount.  
^Protein contributes to a growth in muscle mass and the maintenance of normal bones.





Thank  
you

# You're amazing!

Progress is only made possible by the extraordinary efforts of people like you.

Thank you to all our supporters - you're powering research!

It's not too late to join our team and help beat cancer.

Sign up today at [cruk.org/team](https://cruk.org/team)



CANCER  
RESEARCH  
UK



Registered with  
FUNDRAISING  
REGULATOR

Cancer Research UK is a registered charity in England and Wales (1089464), Scotland (SC041656), the Isle of Man (1103) and Jersey (247) © Cancer Research UK 2024

Together we are  
beating cancer





MY SPORT PHOTOS **Search MY SPORT PHOTOS**







We are your experts in providing pre & post race massage services

# GRAVEN COMPLETE PROFESSIONAL MASSAGE SERVICE

## WE OFFER

### PRE RACE MASSAGE

To ease those aches, loosen joints and prepare you for the big day.

You will leave us feeling refreshed and ready to go!

£19

### POST RACE MASSAGE

Improve your recovery, remove the lactic acid, get back to training faster.

Ease those aches so you don't walk like a duck.

£19

### ADD MUSCLE MEND

This 100% natural oil improves recovery and sport-related aches and pains.

£1

### ASK THE PHYSIO & COACH

Do you have any niggling injuries or training issues which may be slowing you down. Book in and our triathlon expert will give you some professional advice.

£20

## CONTACT

US NOW



07539660422  
Text or call to book



coaching@  
cravencomplete.co.uk



[Buy a voucher here](#)

[www.cravencomplete.co.uk](http://www.cravencomplete.co.uk)

**IMPROVE YOUR RACE WITH US!**



FUEL THAT  
**HIGH 5**  
FEELING





WHERE **YOU** BELONG

**ZONE3** 



[www.ZONE3.com](http://www.ZONE3.com)

**20% OFF USE CODE:  
UKTRIATHLON**